

Specification sheet LX2284

Parapet drainage

LORO-X Light

Parapet drain with bonding flange

Main drainage

Gravity flow

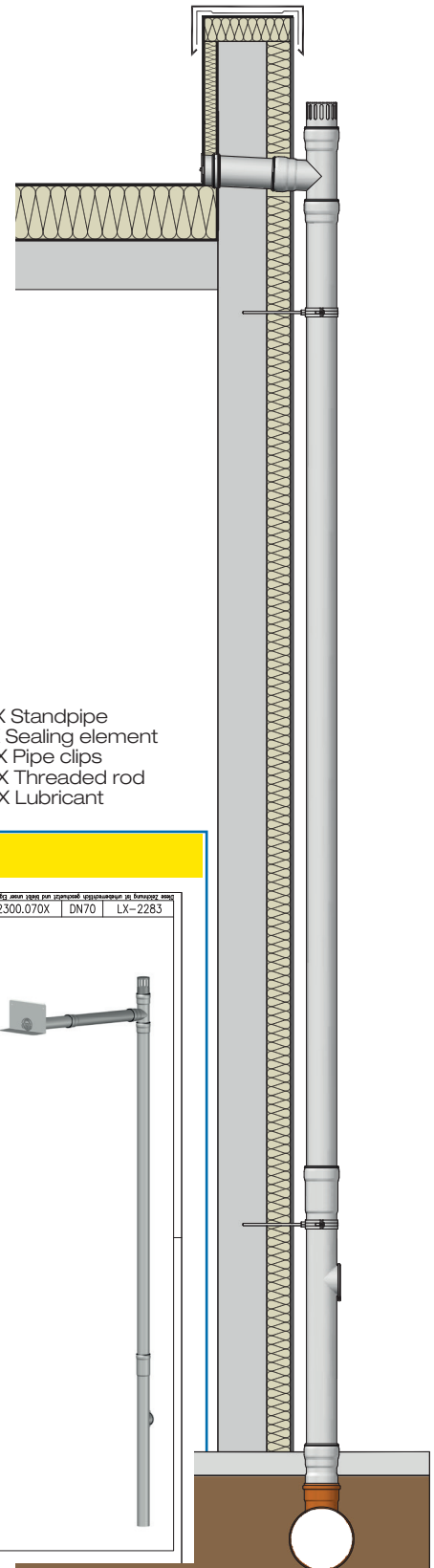
Silent

Discharge rate:	0,40 l/s
Water height:	35 mm
Roof penetration:	0 mm
Diameter:	DN 50
LX-Number:	LX2284
Weir height:	-
Drain:	ventilated
Downpipe:	ventilated
Downpipe height:	4.2 m
Drainage:	in ground pipe
Flange:	bonding flange

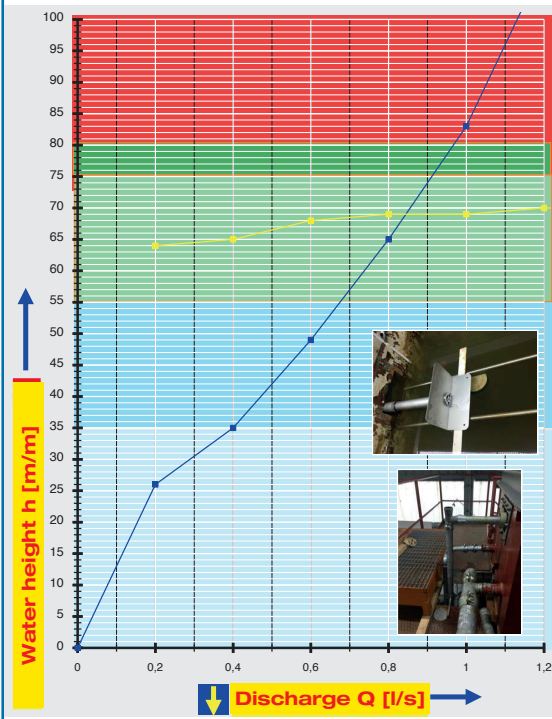
LX2284 Piece list

1 x Art.-No. 12300.050X, LORO-X Light Parapet drain
 1 x Art.-No. 01301.050X, LORO-X Pipe with one socket
 1 x Art.-No. 13217.050X, LORO-X Ventilation piece
 1 x Art.-No. 00200.BB0X, LORO-X Branch
 1 x Art.-No. 01001.050X, LORO-X Pipe with one

1 x Art.-No. 05510.050X, LORO-X Standpipe
 5 x Art.-No. 00911.050X, LORO-X Sealing element
 3 x Art.-No. 00973.050X, LORO-X Pipe clips
 3 x Art.-No. 09604.200X, LORO-X Threaded rod
 1 x Art.-No. 00986.000X, LORO-X Lubricant

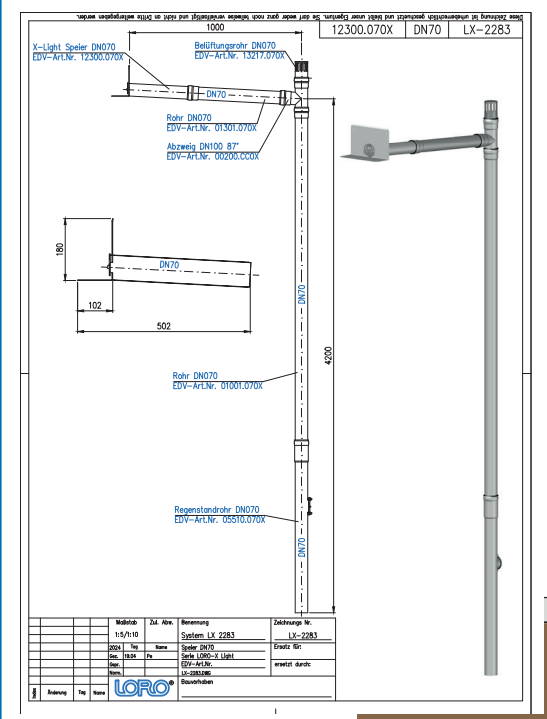


hQ - Discharge curve



System power

CAD



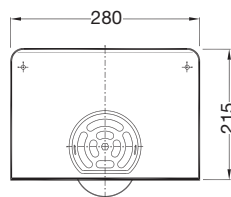
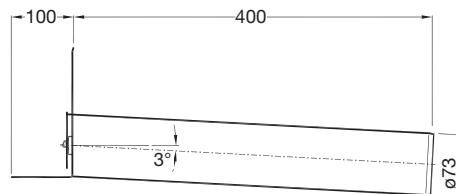
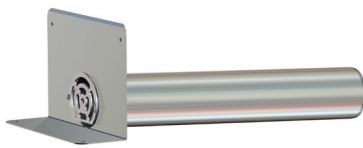
System shape

Water height	mm	15	20	25	30	35	40	45	50	55	60	65	70	75	80	85	90	95	100
Discharge	l/s	-	-	-	0,28	0,4	0,46	0,54	0,61	0,67	0,73	0,8	0,85	0,91	0,97	1,01	1,04	1,09	1,13
Silent																			

LORO-X Light parapet drain with bonding flange

DN 50

LX2284-20X

**Series X-Light
with bonding flange**Drain Art.-No. 12300.050X
Weight: 1,60 kg

Heat tracing: Lorowerk recommends to check all drains and pipes with regard to their frost-sensibility. Where necessary, these parts should be upgraded with heat tracing.